

# SELLAITE

## Private Notes

---

For  
Symbian S60

### User Guide

Document v1.00(2)

# Table of Contents

## 1. Introduction

### 1.1 Features

### 1.2 System requirements

## 2. Copy SIS to the phone.

### 2.1 How to install the application via Nokia PC Suite

### 2.2 How to install the application via Bluetooth, IRDA or Cable

#### 2.2.1 Bluetooth

#### 2.2.2 USB

## 3. Installing Private Notes

## 4. Using Private Notes

# 1. Introduction

## 1.1 Features

Application *Private Notes* used for create the text notes and save them into private folder of file system, this is make them hidden from users and protects from free access. The program supports two languages: English, Russian.

## 1.2 System requirements

- 1) Symbian 9.x S60 3<sup>rd</sup> Edition or later phone OS
- 2) A PC desktop with installed Nokia PC Suite
- 3) Bluetooth/IR/Cable between PC and phone

## 2. Copy SIS to the phone

### 2.1 How to install the application via Nokia PC Suite

All Symbian phones come with a "connectivity suite" (PC suite) - typically native a PC application that provides an easy user interface for copying files to and from the phone, backing up your data and **installing applications**. When you use PC suite to install an application it does all of the copying and installation automatically. The other methods require separate copy and installation stages.

You first need to install PC suite from either the CD that was provided with the phone or the manufacturer's web site. Once the connectivity software is installed:

- Connect your phone via USB.
- Select "PC Suite" on your phone



- On your PC, click the Install Applications icon and follow the on-screen instructions



## 2.2 How to install the application via Bluetooth, IRDA or Cable

### 2.2.1 Bluetooth

#### Install bluetooth drivers

You must have a Bluetooth device installed on your PC. Bluetooth devices from different manufacturers have considerably different user interfaces so please refer to manufacturer's web site if you need help setting it up.

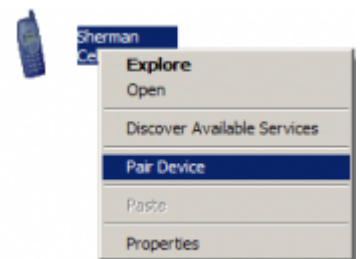
#### Search for devices

You must establish a Bluetooth connection between your PC and your phone. Make sure that your phone is **visible** using the Bluetooth application on the phone (normally under Connectivity on the main menu). Use your PC's Bluetooth application to search for devices. The search may take a few minutes. Your phone should appear on the list of devices.

#### Pairing

Whilst you can complete the transfer without pairing your PC and your phone, pairing allows you to transfer files without having to enter a password every time.

Pairing is a very common function and should be easy to find in the menus. For example, in the HP bluetooth (WIDCOMM) drivers, you can right click on a device in the device list and select 'Pair device'.



#### Transferring a single file

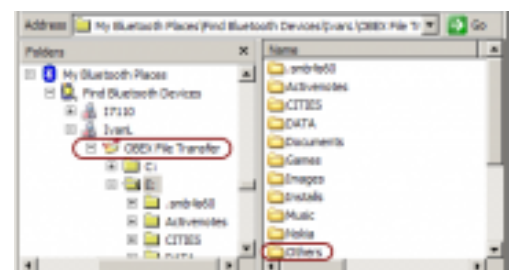
Once your desktop and phone are paired you can drag-and-drop files onto the OBEX **File Transfer on <phone-name>** icon or send them to your phone by right-clicking and selecting **Send To**.

Files uploaded this way arrive on the phone as messages in the Messaging application. When you open the message the installation starts.



#### Browsing your phone's file systems via OBEX

You can access the phone file systems and copy multiple files or whole directory hierarchies by using OBEX file transfer. In our HP client software (WIDCOMM driver) we simply double click on the OBEX File Transfer.



#### Using PC suite over Bluetooth

You can use the install functionality of PC suite over Bluetooth. Follow the instructions in your PC suite to connect to your phone. Use the Install Applications icon to install your application.

## 2.2.2 USB

This is a fairly straightforward way of transferring files. The phone appears as an external disk when connected to your computer via USB.

### Note

For some phones, it is necessary to first install USB drivers. Use the CD supplied with your phone to install the drivers, or get the latest driver from the phone manufacturer.

Here are the steps:

1. On your PC right click on the file you want to upload (typically SIS, SISx, JAR or WGZ file) and select **Copy**
2. Connect your phone to the computer using a USB cable. Your phone will display a dialog (Figure 1). Select **Mass media**.
3. The phone's mass media should appear as a removable disk in your file manager (Figure 2). In this example, the OS has assigned drive letter **H:** to the phone.
4. Right click on **H:\Others** in your file manager, and select **Paste**
5. Safely disconnect the phone - see Figure 3.



Figure 1 USB Connection menu

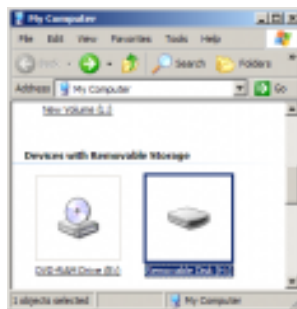


Figure 2 Phone appears as a removable drive

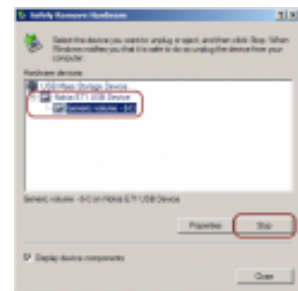


Figure 3 Safely disconnect the phone

You can now proceed with installation as follows:

1. On your phone, open File Manager
  1. File Manager can be found in the **Applications** menu on most phones.
  2. On business phones (e.g. E series), File Manager is usually in the **Office** menu
2. Open **mass media**, usually E drive on your phone, then open the **Other** folder.
3. Find the file you just transferred and open it. This starts the installation process.



Figure 4. File manager



Figure 5. 'Other' directory on mass media



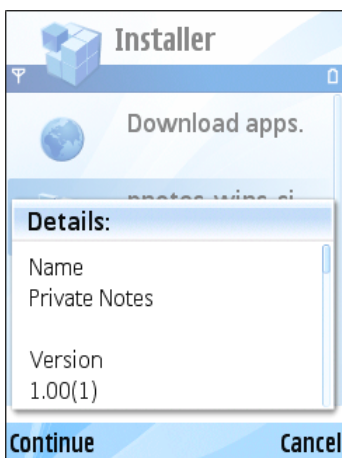
Figure 6. Open the file to start installation

### 3. Installing Private Notes



Before you can use *Private Notes*, it needs to be installed on your handset. At the end of the download process, the following screen appears.

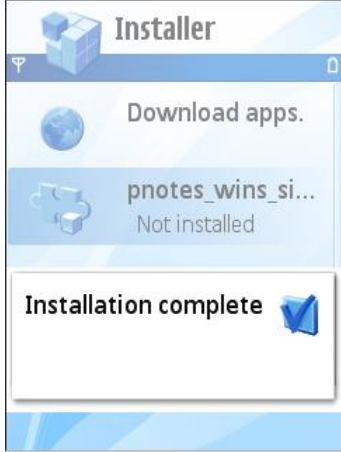
Press **Yes** using your left soft key.



Read details about program.  
Click **Continue** and continue to install *Private Notes*.



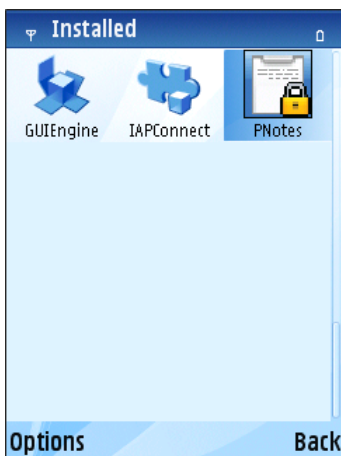
Select the location you would like to use and press **Select** using your left soft key



Once the installation is complete, an Installation Complete message appears briefly. You are now ready to run *Private Notes*.



Installed application can be found in **Applications** or **Installed** folder.

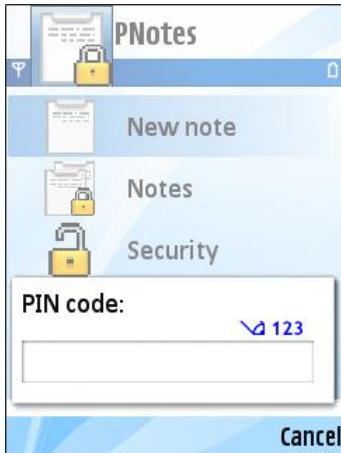


For run the application move cursor to the icon and select **Open** from **Options** menu.



## 4. Using Private Notes

### 4.1 Entering



A PIN codes is required to secure the program from other people and to protect your notes. *Private Notes* uses two different type of PIN codes:

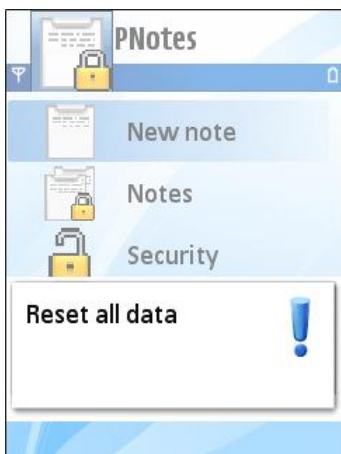
1. **PIN** used for entering to application.
2. **PIN Reset** used for remove all data and settings.

Default values:

**PIN** = 12345

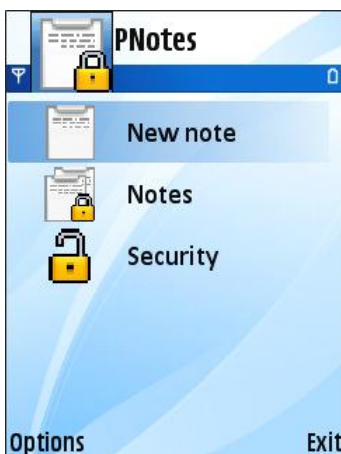
**PIN Reset** = 54321

For entering to *Private Notes* enter the PIN code in dialog.



**Warning:** If you enter the **PIN Reset** code next dialog will be appear. This dialog let You know that all notes will be removed from device and PIN codes will be set to default values.

### 4.2 Main menu

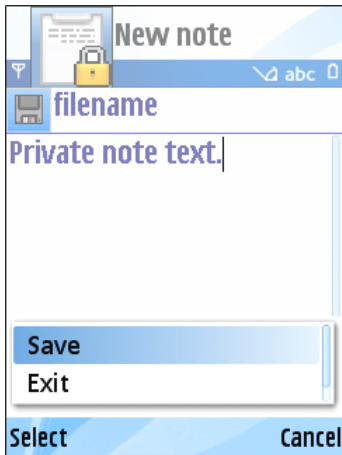


Main menu of program contain three items:

- 1) **New note** – menu used for creating of new notes and storing them into private folder of device
- 2) **Notes** – menu used for reading and removing stored notes
- 3) **Security** – menu used for setting up PIN codes

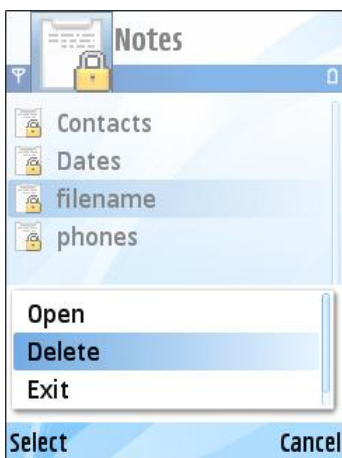
Use up/down arrow to select needed menu item.

## 4.3 New Note



To create and store protected Notes open editor from menu **New note**.

1. Write new note for storing.
2. Use up/down arrow to focus the Filename field and enter **new name** for note.
3. Store note uses command of **Save** from **Options**.



If you want to read/edit or delete notes select the **Notes** menu item :

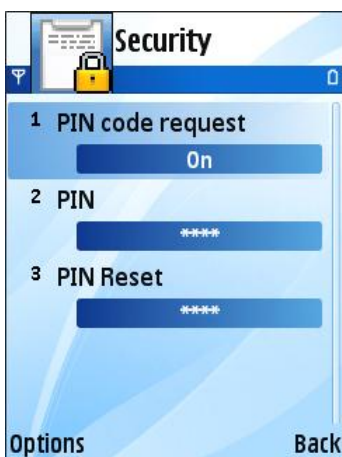
For **Reading** protected Notes:

1. Uses up/down arrow to focus the Note.
2. Open the message uses command **Open** from menu **Options**.
3. Do edit note.
4. Save note from **Options** menu.

For **Delete** note:

1. Uses up/down arrow to focus the Note.
2. Open the message uses command **Delete** from menu **Options**.

## 4.4 Security



Security settings enables to set **PIN/PIN Reset** codes for *Private Notes* and show or hide a PIN dialog request for entering to program

**PIN code request** value can be set to ON/OFF from menu **Options**.



**PIN** is a secret key for entering to program, cannot be empty.

**PIN Reset** is secret key for resetting all data to default values.

Default values:

PIN1 = 12345

PIN2 = 54321



In case if You entering PIN codes with the same values will be appear warning note, and the last entered PIN will be **NOT** saved.